

**Report No.:** 48226822e6 001

Page 1 of 6

**Client:** CHIMEI Corporation  
No.398, Sec. 1, Zhongzheng Rd., Rende Dist., Tainan City 717010, Taiwan,  
R.O.C.

**Test item(s):** Plastic

**Identification/Model No(s):** ACRYLONITRILE-BUTADIENE-STYRENE COPOLYMER/  
POLYLAC® PA-704LRP

**Sample obtaining method:** Sending by customer

**Condition at delivery:** Test item complete and undamaged.

**Sample receiving date:** 2023-12-04

**Testing period:** 2023-12-04 – 2024-01-02

**Place of testing:** TÜV Rheinland (Shanghai) Co. Ltd.

**Test specification:**

According to RoHS (recast): Restriction of the Use of Certain Hazardous Substances in Electrical and Electronic Equipment, 2011/65/EU Annex II and its amendment Directive (EU) 2015/863: Total Content of Lead, Cadmium, Mercury, Chromium VI, Polybrominated Biphenyls, Polybrominated Diphenyl Ethers; and Benzylbutyl phthalate (BBP), Dibutyl phthalate (DBP), Bis(2-ethylhexyl) phthalate (DEHP), Diisobutyl phthalate (DIBP)

**Test result:**

Pass

For and on behalf of  
TÜV Rheinland Taiwan Ltd.



Arthur Cheng/Project Manager  
Name/Position

2024-01-02  
Date



*Sample information is provided by customer. Test result is drawn according to the kind and extent of tests performed. This test report relates to the above mentioned test sample. Without permission of the test center this test report is not permitted to be duplicated in extracts. This test report does not entitle to carry any safety mark on this or similar products. "Decision Rule" document announced in our website (<https://www.tuv.com/landingpage/en/qm-gcn/>) describes the statement of conformity and its rule of enforcement for test results are applicable throughout this test report..*

Test Report No.: 48226822e6 001

Page 2 of 6

**Material List:**

Item: POLYLAC® PA-704LRP

| Mat. No. | Material | Color     | Lab no.      |
|----------|----------|-----------|--------------|
| 1        | Plastic  | Off white | TCL231204-35 |

**Test sample**



Test Report No.: 48226822e6 001

Page 3 of 6

Test Method : Total Cadmium, Lead, Mercury, Chromium  
 - Ref. to IEC 62321-4:2013 and IEC 62321-5:2013  
 Chromium (VI)  
 - For Metal material - Ref. to IEC 62321-7-1:2015  
 - For Polymer, Electronic material or others materials - Ref. to IEC 62321-7-2:2017  
 PBBs, PBDEs - Ref. to IEC 62321-6:2015

| Material No.   | 1     |    |        |
|--|-------|----|--------|
| Parameter  | Unit  | RL | Result |
| Cadmium (Cd)   | mg/kg | 2  | < RL   |
| Lead (Pb)  | mg/kg | 2  | < RL   |
| Mercury (Hg)   | mg/kg | 2  | < RL   |
| Chromium VI (Cr VI)*                                 | mg/kg | 8  | < RL   |
| <b>Sum of Polybrominated biphenyls (PBBs)</b>        | mg/kg | -  | < RL   |
| Monobromobiphenyl                                    | mg/kg | 5  | < RL   |
| Dibromobiphenyl                                      | mg/kg | 5  | < RL   |
| Tribromobiphenyl                                     | mg/kg | 5  | < RL   |
| Tetrabromobiphenyl                                   | mg/kg | 5  | < RL   |
| Pentabromobiphenyl                                   | mg/kg | 5  | < RL   |
| Hexabromobiphenyl                                    | mg/kg | 5  | < RL   |
| Heptabromobiphenyl                                   | mg/kg | 5  | < RL   |
| Octabromobiphenyl                                    | mg/kg | 5  | < RL   |
| Nonabromobiphenyl                                    | mg/kg | 5  | < RL   |
| Decabromobiphenyl                                    | mg/kg | 5  | < RL   |
| <b>Sum of Polybrominated diphenyl ethers (PBDEs)</b> | mg/kg | -  | < RL   |
| Monobromodiphenyl ether                              | mg/kg | 5  | < RL   |
| Dibromodiphenyl ether                                | mg/kg | 5  | < RL   |
| Tribromodiphenyl ether                               | mg/kg | 5  | < RL   |
| Tetrabromodiphenyl ether                             | mg/kg | 5  | < RL   |
| Pentabromodiphenyl ether                             | mg/kg | 5  | < RL   |
| Hexabromodiphenyl ether                              | mg/kg | 5  | < RL   |
| Heptabromodiphenyl ether                             | mg/kg | 5  | < RL   |
| Octabromodiphenyl ether                              | mg/kg | 5  | < RL   |
| Nonabromodiphenyl ether                              | mg/kg | 5  | < RL   |
| Decabromodiphenyl ether                              | mg/kg | 5  | < RL   |

Notes:

- < = less than
- RL = Reporting Limit
- n.a. = not applicable
- mg/kg = milligram per kilogram
- \* Once the total Cr content in metal/ plastic or electronic sample is found to be exceeded the limit, the Cr (VI) content will be confirmed with reference to IEC 62321-7-1:2015/ IEC 62321-7-2:2017

|   | Cd  | Cr(VI) | Pb   | Hg   | PBBs | PBDEs |
|---|-----|--------|------|------|------|-------|
| <b>Maximum permissible Limit acc. to 2011/65/EU (mg/kg)</b> | 100 | 1000   | 1000 | 1000 | 1000 | 1000  |

Test Report No.: 48226822e6 001

Page 4 of 6

Test Method : BBP/DBP/DEHP/DIBP - Ref. to IEC 62321-8:2017

Material No.

1

| Parameter                    | Unit  | RL | Result |
|------------------------------|-------|----|--------|
| Benzylbutylphthalate (BBP)   | mg/kg | 50 | < RL   |
| Dibutylphthalate (DBP)       | mg/kg | 50 | < RL   |
| Diethylhexylphthalate (DEHP) | mg/kg | 50 | < RL   |
| Diisobutylphthalate (DIBP)   | mg/kg | 50 | < RL   |

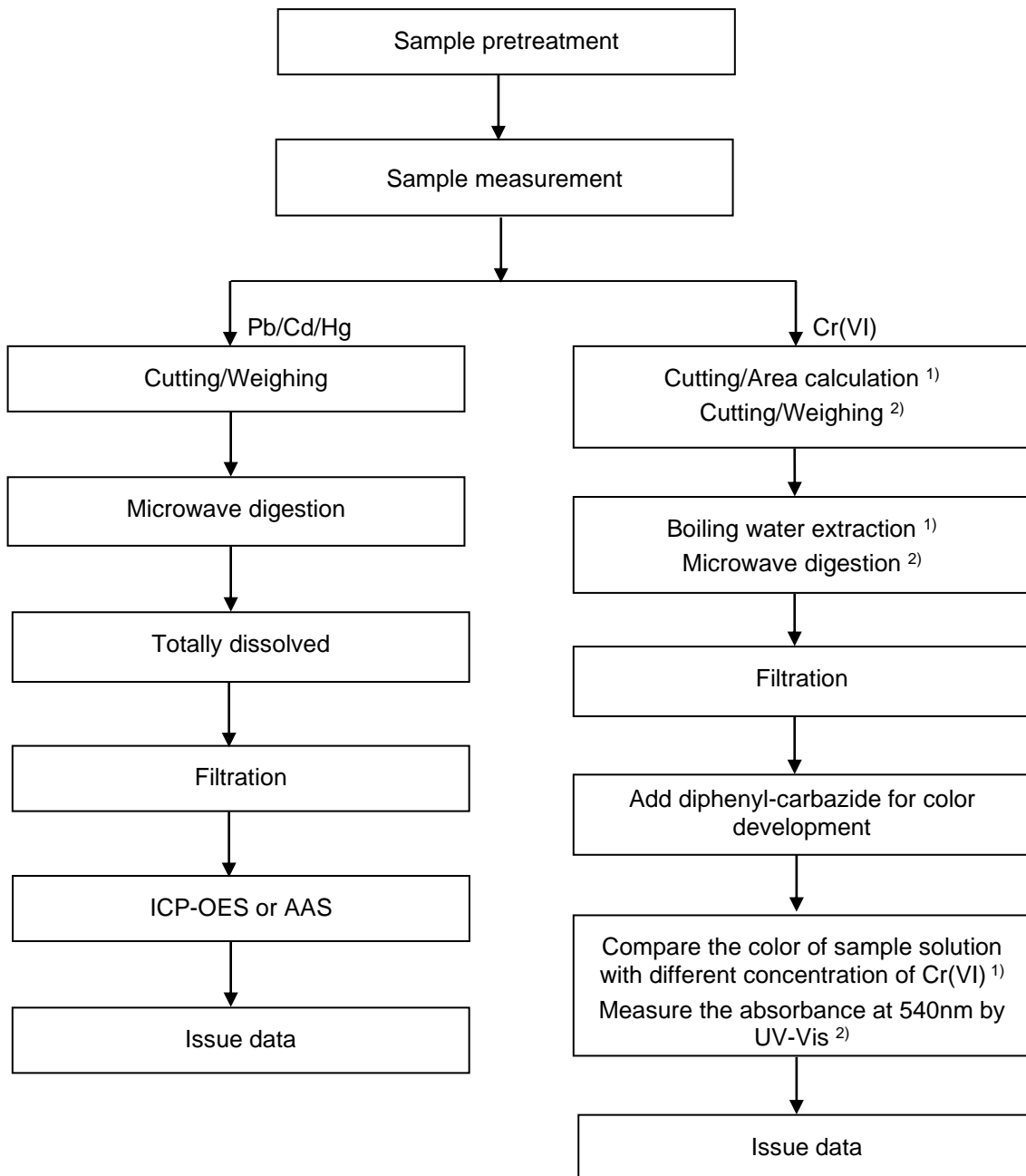
Notes:

- < = less than
- RL = Reporting Limit
- n.a. = not applicable
- mg/kg = milligram per kilogram

|  | <b>BBP</b> | <b>DBP</b> | <b>DEHP</b> | <b>DIBP</b> |
|--|------------|------------|-------------|-------------|
| <b>Maximum permissible Limit acc. to (EU) 2015/863 (mg/kg)</b> | 1000       | 1000       | 1000        | 1000        |

**Testing procedure:**

RoHS (Pb, Cd, Hg, Cr(VI))

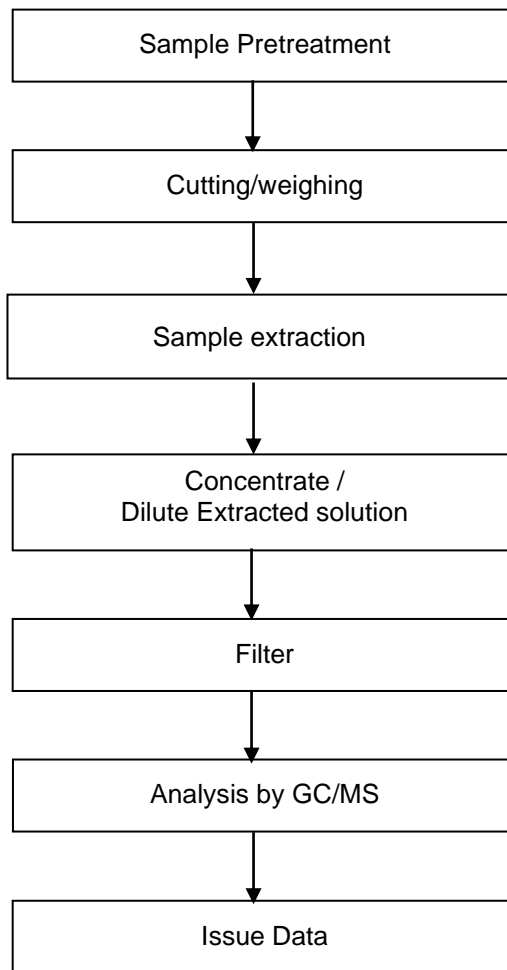


Notes: <sup>1)</sup> For metallic material

<sup>2)</sup> For non-metallic material

**Testing procedure:**

RoHS (PBBs/PBDEs, DEHP/DBP/BBP/DIBP)



--- End of Test-Report ---